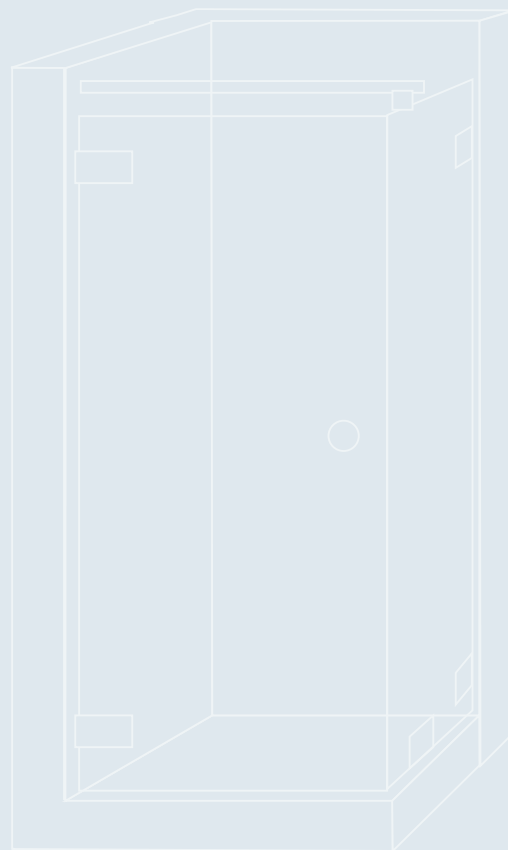


# DRAGONFLY SHOWERS SYSTEMS



2 ELOA



4 MELORA



5 MARINE



6 MAREVA



7 CORALIA



8 Partition clips  
Pièces de fixation



10 Accessories  
Accessoires

In both residential homes and hotels, bathrooms have become a living environment in their own right where users expect to find rest and relax in an aesthetically pleasing atmosphere. Our products bring design and comfort to customised installations that are unique and tailored entirely to your creative ideas.

Equipping your shower cubicles with ELOA, MELORA, MARINE, MAREVA or CORALIA hinges enhances the glass panels and the space around them. Your imagination is no longer restricted by standard shower sizes, allowing you to use the available space to best advantage.

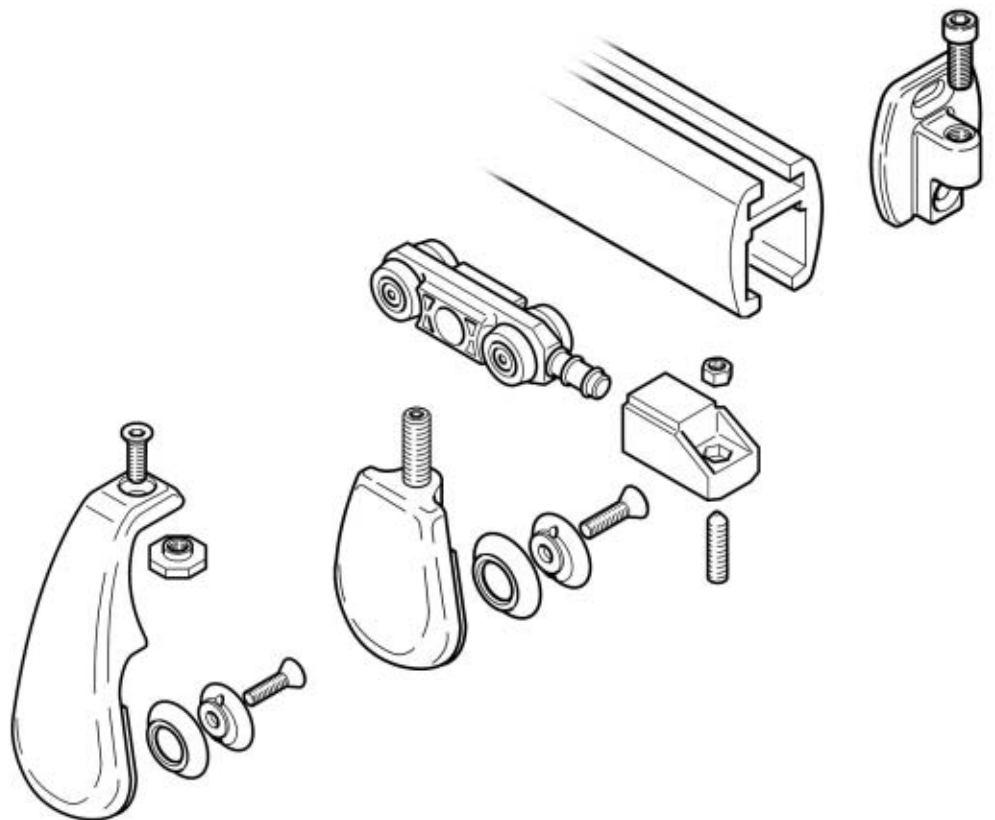




# ELOA



The latest technological innovations have been incorporated into the ELOA system's modern stylised lines, for easy installation and greater user convenience.



Shower sliding systems



2820.XX.1  
 CASE 1 - Wall to wall sliding door:  
 A sliding door and a fixed panel. Sliding door on the left or right side. Wall to wall distance: 2200 mm. Maximum door weight: 30 kg.



2820.XX.2  
 CASE 2 - Corner access sliding door:  
 A sliding door and a fixed panel on each side. Maximum tray width 1100 x 1100 mm. Maximum door width 550 mm. Maximum door weight: 30 kg.



2820.XX.3  
 CASE 3 - Frontal access sliding door: A sliding door and a fixed panel on the left or right side. Tray width 1100 x 1100 mm. Maximum door weight: 30 kg.

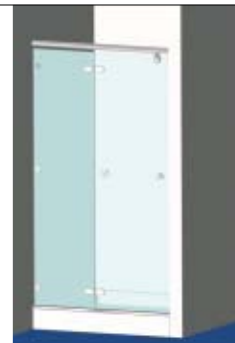
Shower folding systems



2820.XX.4  
 CASE 4 - Frontal access sliding door: A sliding door and a fixed panel, a fixed panel and a fixed panel on the bath-tube. Maximum tray width 1100 x 1100 mm. Maximum door width 550 mm. Maximum door weight: 30 kg.



2820.XX.5  
 CASE 5 - Wall to wall sliding door: A sliding door and a fixed panel on each side. Wall to wall distance: 2200 mm. Maximum door weight: 30 kg.

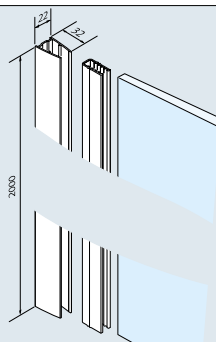


2820.XX.6  
 CASE 6 - Wall to wall folding door:  
 Folding door, to the inside of the shower. Maximum tray width: 1100 x 1100 mm.

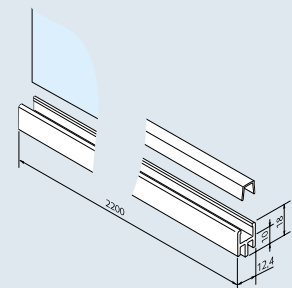
Profile for fixed panel



2820.XX.7  
 CASE 7 - Frontal access sliding door: A folding door, to the inside of the shower and a fixed panel on the right or left side. Maximum tray width: 1100 x 1100 mm.



2818  
 Vertical profile for fixed panel.



2819  
 Lower profile for fixed panel.

Hinge for shower screens  
 For 10 and 12 mm glass.  
 Made of brass.  
 Stainless steel rotation pin.  
 Max load 40 kg.



# MELORA



3560.\*\*.0R



3561.\*\*.0R



3562.\*\*.0R

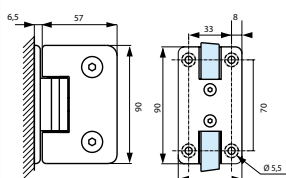


3562.\*\*.2R

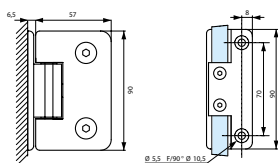
4

Single adjustable hinge

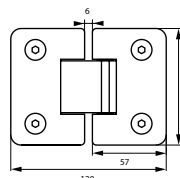
Glass to glass adjustable hinge



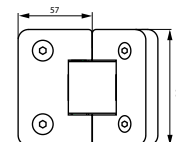
3560.\*\*.0R  
 90° blocking with 4 fixing points  
 For 10 to 12 mm thick glass



3561.\*\*.0R  
 90° blocking with 2 fixing points  
 For 10 to 12 mm thick glass



3562.\*\*.0R  
 90° blocking point  
 For 10 to 12 mm thick glass



3562.\*\*.2R  
 135° blocking point  
 For 10 to 12 mm thick glass.

Hinge for shower screens  
 For 8 and 10 mm thick glass.  
 Aluminium bronze.  
 Stainless steel rotation pin.  
 2 mounting system.  
 Max load 40 kg.



# MARINE



3260.\*\*.0R



3261.\*\*.0R



3262.\*\*.0R



3262.\*\*.2R



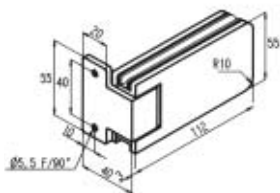
3263



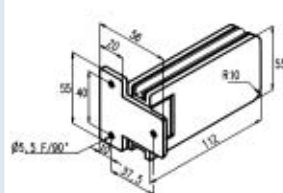
3264

## Single adjustable hinge

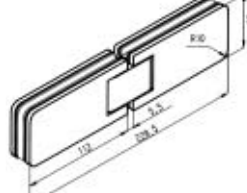
## Glass to glass adjustable hinge



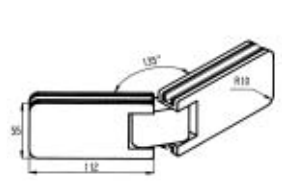
3260.\*\*.0R  
 90° blocking with 2 fixing points  
 For 8 to 10 mm thick glass.



3261.\*\*.0R  
 90° blocking with 3 fixing points  
 For 8 to 10 mm thick glass.



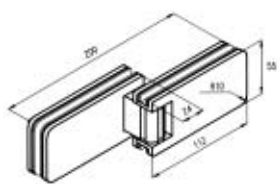
3262.\*\*.0R  
 90° blocking.  
 For 8 to 10 mm thick glass.



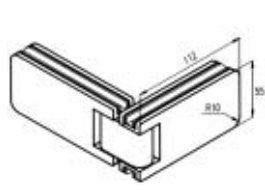
3262.\*\*.2R  
 135° blocking.  
 For 8 to 10 mm thick glass.

## Overlapping shower hinge

## Corner shower hinge



3263  
 For 8 to 10 mm thick glass.



3264  
 For 8 to 10 mm thick glass.

Hinges for shower screens  
 For 6 and 8 mm thick glass.  
 Aluminium bronze. Stainless steel  
 rotation pin.



# MARÉVA



3160.\*\*.0R



3161.\*\*.0R



3162.\*\*.0R



3162.\*\*.2R



3163

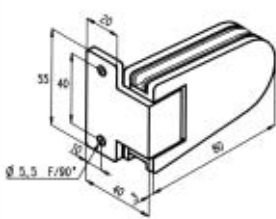


3164

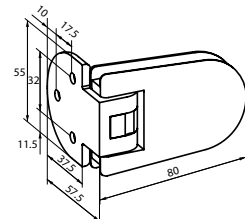
6

## Single adjustable hinge

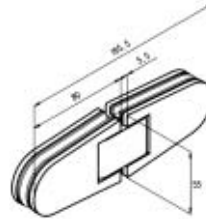
## Glass to glass adjustable hinge



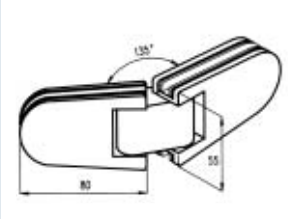
3160.\*\*.0R  
 90° blocking with 2 fixing points  
 For 6 to 8 mm thick glass.



3161.\*\*.0R  
 90° blocking with 3 fixing points  
 For 6 to 8 mm thick glass.



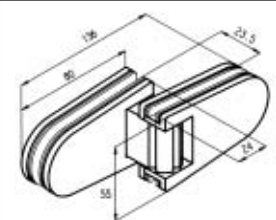
3162.\*\*.0R  
 90° blocking.  
 For 6 to 8 mm thick glass.



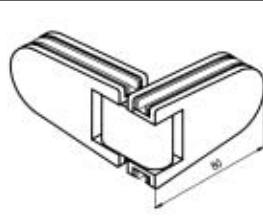
3162.\*\*.2R  
 135° blocking.  
 For 6 to 8 mm thick glass.

## Overlapping shower hinge

## Corner shower hinge

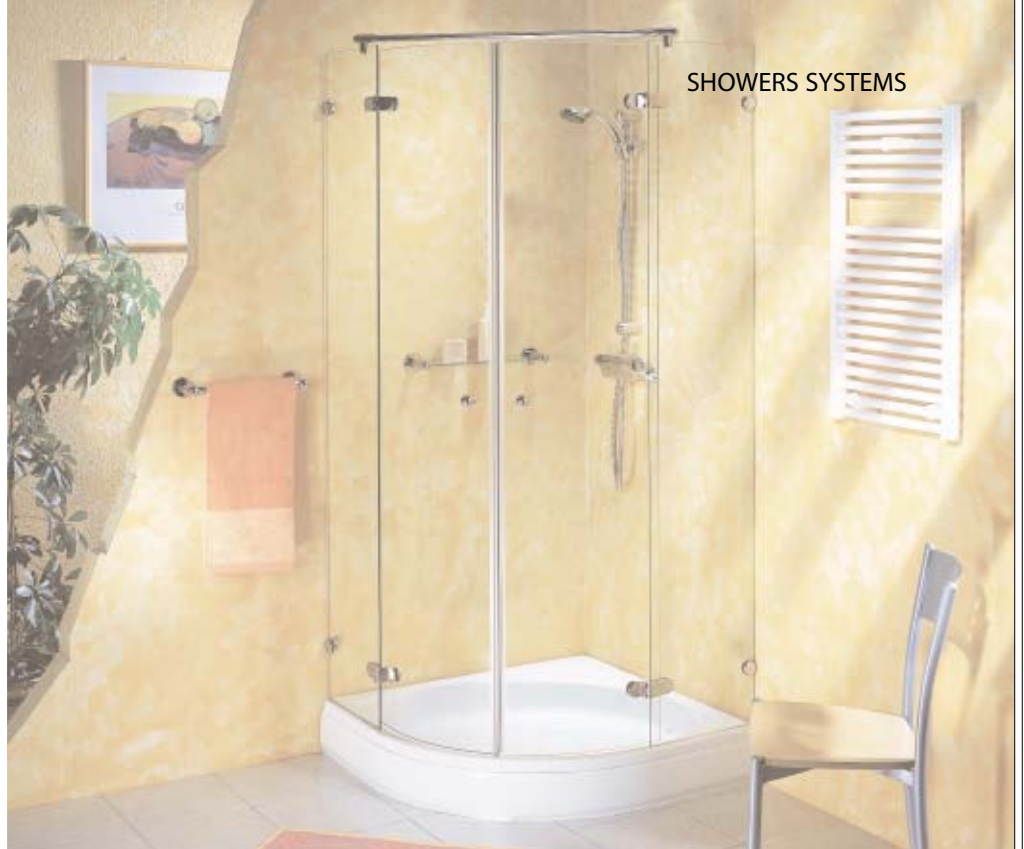


3163  
 For 6 to 8 mm thick glass.



3164  
 For 6 to 8 mm thick glass.

Hinge for shower screens  
For 6 and 8 mm thick glass.  
Made of brass.  
Stainless steel rotation pin.



# CORALIA



3060



3069



3062

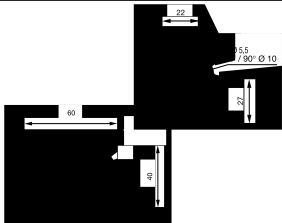


3063

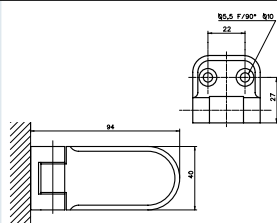
Single hinge

Glass to glass shower hinge

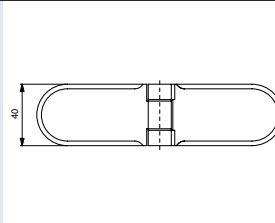
Overlapping shower hinge



3060  
Single hinge with 2 fixing points,  
without blocking point.  
For 6 and 8 mm thick glass.



3069  
Single hinge with 2 fixing points,  
without blocking point.  
For 6 and 8 mm thick glass.



3062  
Glass to glass shower hinge  
without blocking point.  
For 6 and 8 mm thick glass.



3063  
Overlapping shower hinge glass to  
glass without blocking point  
For 6 and 8 mm thick glass.



## PARTITION CLIPS

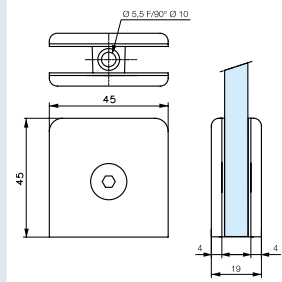


Partition clip for fixed panel  
For 6 to 12 mm glass.  
Tightened with 1 or 2 screw.  
Made of aluminium bronze.

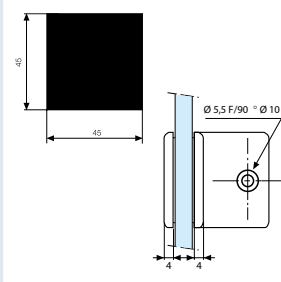




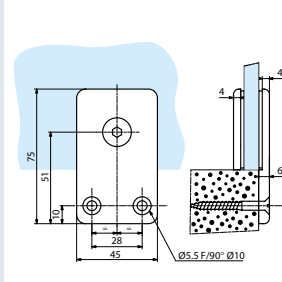
Partition clips for fixed shower screens



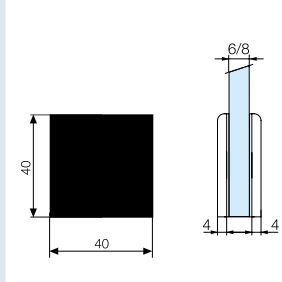
**3265**  
Partition clip for fixed panel  
for 8 and 10 mm glass.



**3465**  
Partition clip for fixed corner panel  
for 8, 10 and 12 mm glass.

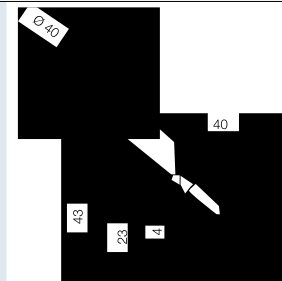


**3565**  
Partition clip for fixed panel  
assembly onto low wall  
for 8, 10 and 12 mm glass.

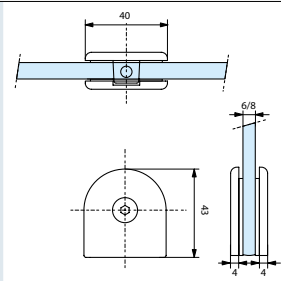


**3165**  
Partition clip for fixed panel  
for 6 and 8 mm glass.

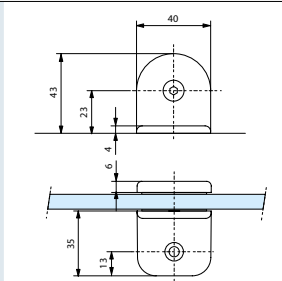
Partition clips for fixed shower screens



**3065**  
Partition clip for fixed panel  
for 6 and 8 mm glass.

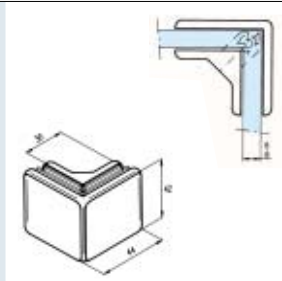


**3075**  
Partition clip for fixed panel  
for 6 and 8 mm glass.



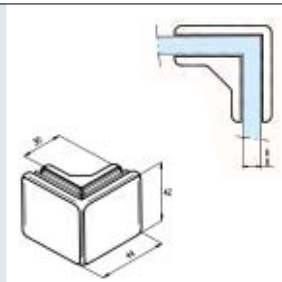
**3085**  
Partition clip for fixed panel  
for 6 and 8 mm glass.

Range accessories

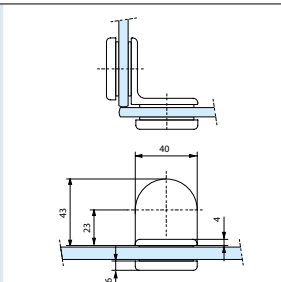


**3255**  
Corner partition clip with clamp  
for fixed panel at 90°.  
Assembled at the edge of the  
glass.  
For 6 and 8 mm glass.

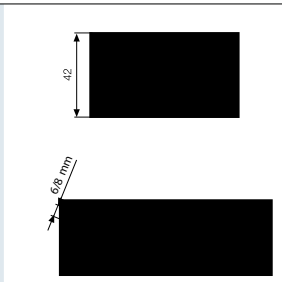
Range accessories



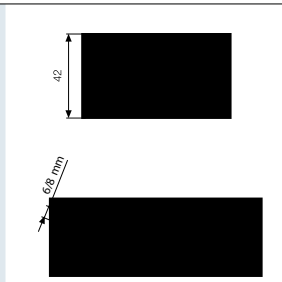
**3256**  
Corner clamping plate with  
clamp for fixed panel at 90°.  
Assembled in the middle of  
the panel.  
For 6 and 8 mm glass.



**3056**  
Corner partition clip for fixed panel.  
Assembled in the middle of the panel.  
For 6 and 8 mm glass.



**3258**  
Partition clip with clamp for fixed  
panel at 135°.  
Assembled at the edge of the glass.  
For 6 to 8 mm thick glass.



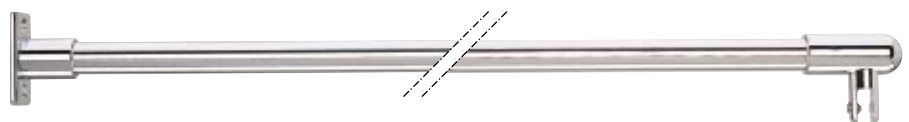
**3257**  
Partition clip with clamp for fixed  
panel at 135°.  
Assembled in the middle of the panel.  
For 6 to 8 mm thick glass.



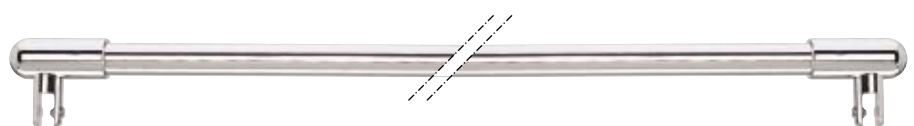
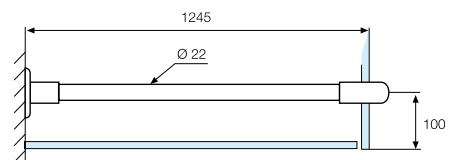
## ACCESSORIES

### Reinforcement bars

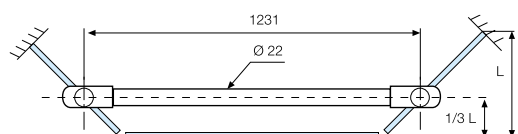
For glass thickness 6 to 10 mm.  
 Made of brass.  
 Assembled without notch on the fixed panel. Fixed panel is held in place by an adjustable clip tightened by a plastic tipped screw.  
 Fixed onto the wall by a plate.  
 Tube 1200 mm long modified by cutting down to size required.



**1657**  
 Reinforcement bar glass wall  
 for glass thickness 6 to 10 mm.



**1658**  
 Reinforcement bar glass/glass  
 for glass thickness 6 to 10 mm.



Knobs for shower screen



**3267**  
Contoured knob 32 mm Ø for 6 to 10 mm thick glass.  
Fits on 14 mm Ø hole.



**3066**  
Round head knob 40 mm Ø for 6 to 10 mm thick glass.  
Fits on 16 mm Ø hole.



**3259**  
Round head knob 32 mm Ø for 6 to 10 mm thick glass.  
Fits on 14 mm Ø hole.



**3266**  
Round head knob 32 mm Ø for 6 to 10 mm thick glass.  
Fits on 14 mm Ø hole.

Translucent sealing strip for shower doors and screens



**3099**  
Anti-slip Knob 40 mm Ø for 6 to 10 mm thick glass.  
Fits on 10 mm Ø hole.



**2812.00.X**  
Sealing strip with off-set lip, 2 versions for 6 and 8 mm thick glass.



**2812.01.X**  
Sealing strip with central lip, 3 versions for 6, 8 and 10 mm thick glass.



**2812.02.X**  
Sealing strip with off-set lip, 3 versions for 6, 8 and 10 mm thick glass.



**2812.03.X**  
Sealing strip with lateral lip 2 versions for 6 and 8 mm thick glass.



**2812.04.X**  
Sealing strip with lip and stop for 8 mm thick glass.



**2812.08.X**  
Sealing strip with lateral lip, 2 versions for 6 and 8 mm thick glass.



**2812.06.X**  
Sealing strip with compressor for 6 and 8 mm thick glass.



**2813.00.0**  
Magnetic translucent sealing strip Recommended as closing device and to prevent water escaping between 2 panels at 180°.



**2813.00.01**  
Magnetic translucent sealing recommended as closing device and to prevent water escaping between 2 panels at 180°.



**2813.00.05**  
Magnetic translucent sealing recommended as closing device and to prevent water escaping between 2 round panels.



**2813.06.0**  
Recommended as closing device and to prevent water escaping between 2 panels at 90°.